

SIMANDL



TRUST INNOVATION QUALITY

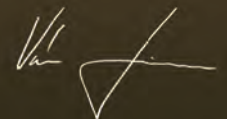
28 years of family business



**28**  
YEARS ANNIVERSARY

- 1995 ● SIMANDL was founded by Václav Simandl
- 1997 First private label production
- 2004 New manufacturing hall
- 2010 Veterinary certification
- 2014 First export to Africa [Egypt]
- 2015 First bulk shipments to Middle East [UAE]
- 2016 First export to Asia [Japan]
- 2017 Export to 15 countries, turnover 5 mil EUR
- 2018 Production of 138 unique recipes
- 2019 Third production hall opened
- 2020 First deliveries for UN Peacekeeping
- 2021 Export growth by 1 million euros
- 2022 ● Export growth by 2.8 million euros

„Simandl is the name you can trust“



company founder

RETAIL

PRIVATE LABELS

- 3 continents
- 40 countries
- 45 private labels

DARKOFF®



OUR BRANDS

VENDING & HORECA



With your label  
from 500 pcs

PACKING COMPANIES

BULK



From 300 kg  
in bags or big bags



**AEO**  
certified

**PLMA**  
member

**VETERINARY**  
certified

**IFS**  
certified

**FDA**  
registered

PRODUCT DEVELOPMENT

From 500 kg of bulk



We develop new recipes



We can use your own ingredients



We source raw materials



We can copy your sample

Vegan • Organic • Clean label • Eco friendly • Kosher • Halal

Send us your idea, recipe or sample and we will do the rest.



**3in1**  
coffee  
+ creamer  
+ sugar



**2in1**  
coffee  
+ creamer



21 private labels



**3in1**  
Ice coffee  
+ creamer  
+ sugar



Cold refreshment

**3in1**  
Tea  
+ creamer  
+ sugar



Black tea

name of product	weight	packing	pcs / crt	crt/pallet	pcs/pallet *	shelf life
Coffee 3in1	10 x 18 g	box	12	160	1920	18 months
Coffee 3in1	10 x 18 g	bag	12	64	768	18 months
Coffee 2in1	10 x 16 g	box	12	160	1920	18 months
Coffee 2in1	10 x 16 g	bag	12	64	768	18 months
Ice coffee 3in1	10 x 18 g	box	12	160	1920	18 months
Tea 3in1	10 x 18 g	box	12	160	1920	18 months

\* EURO pallet, height up to 210 cm

**Cappuccino**  
- vanilla  
- classic  
- hazelnut  
- chocolate



9 % of coffee

**Cappuccino**  
instant  
Italian style  
coffee drink



**Cappuccino**  
Wiener Melange

Original recipe



**Cappuccino**  
Creamy & Tender

Original recipe



**Cappuccino**  
Unsweetened

Grass-fed milk



name of product	weight	packing	pcs / crt	crt/pallet	pcs/pallet *	shelf life
Cappuccino	100 g	doypack	20	98	1960	18 months
Cappuccino	10 x 17 g	box	10	144	1440	18 months
Wiener Melange	10 x 15 g	box	10	144	1440	18 months
Creamy & Tender	10 x 17 g	box	10	144	1440	18 months
Unsweetened	10 x 14 g	box	10	144	1440	18 months

\* EURO pallet, height up to 210 cm



**Caffé latte**  
instant Italian style  
coffee drink  
with milk



Grass-fed milk

**Protein**  
coffee drink  
PLMA  
New product award



High in protein

PLMA award

**Hot chocolate**



25 % of cocoa

**Protein**  
cocoa drink



High in protein

**Instant coffee**  
freeze dried,  
agglomerated,  
spray dried



Glass jar

**Instant coffee**  
flavoured



Glass jar

**Oat milk**  
gluten free  
PLMA  
New product award



High in fibre

**Coconut**  
drink with milk



Source of calcium

**Coffee creamer**  
palm or  
coconut oil



Multiple choices

name of product	weight	packing	pcs / crt	crt/pallet	pcs/pallet *	shelf life
<b>Caffé latte</b>	10 x 17 g	box	10	144	1440	18 months
<b>Protein coffee</b>	10 x 20 g	box	10	144	1440	18 months
<b>Instant coffee</b>	50 g	glass	10	320	3200	18 months
<b>Flavoured coffee</b>	50 g	glass	8	320	2560	18 months
<b>Coffee creamer</b>	200 g	doypack	10	160	1600	24 months
<b>Coffee creamer</b>	400 g	glass	6	176	1056	24 months

\* EURO pallet, height up to 210 cm

**Soy protein**  
milk



High in protein

name of product	weight	packing	pcs / crt	crt/pallet	pcs/pallet *	shelf life
<b>Hot chocolate</b>	12 x 18 g	bag	12	64	768	18 months
<b>Hot chocolate</b>	150 g	doypack	12	180	2160	18 months
<b>Hot chocolate</b>	20 x 20 g	box	20	60	1200	18 months
<b>Protein cocoa</b>	10 x 20 g	box	10	144	1440	18 months
<b>Oat milk</b>	10 x 20 g	box	10	144	1440	18 months
<b>Coconut drink</b>	10 x 20 g	box	10	144	1440	18 months
<b>Soy protein</b>	10 x 20 g	box	10	144	1440	18 months

\* EURO pallet, height up to 210 cm



**KETO coffee**  
Bulletproof  
PLMA  
New product award



Suitable for Keto diet

**KETO choco**  
Hot chocolate  
PLMA  
New product award



No added sugar

**Chocolate drink**  
35 % of cocoa  
High in fibre



Vegan

**Golden latté**  
Prebiotic fibre  
Plant based drink



Vegan

**KETO tea**  
Matcha latte  
PLMA  
New product award



Low carb

**Matcha latte**  
genuine Japanese



Natural antioxidants

**Emerald latté**  
Prebiotic fibre  
Plant based drink



Vegan

**Velvet latté**  
Plant based drink  
Hot & Cold



Vegan

**Detoxification drink**



Vegan

name of product	weight	packing	pcs / crt	crt/pallet	pcs/pallet*	shelf life
KETO coffee	10 x 12 g	box	10	144	1440	9 months
KETO choco	10 x 12 g	box	10	144	1440	9 months
KETO tea	10 x 12 g	box	10	144	1440	9 months
Matcha latte	10 x 20 g	box	10	144	1440	18 months
Detox drink	10 x 20 g	box	10	144	1440	12 months

\* EURO pallet, height up to 210 cm

**Energy drink**  
320 mg of caffeine  
3 g of taurine



Hot & Cold

name of product	weight	packing	pcs / crt	crt/pallet	pcs/pallet*	shelf life
Chocolate drink	500 g	paper can	6	192	1152	18 months
Golden latté	175 g	paper can	10	240	2400	12 months
Emerald latté	175 g	paper can	10	240	2400	12 months
Velvet latté	175 g	paper can	10	240	2400	12 months
Energy drink	175 g	paper can	10	240	2400	12 months

\* EURO pallet, height up to 210 cm



**Lemon tea**  
instant tea  
lemon juice inside  
available with Vitamins



**Earl grey tea**  
instant tea  
available with Vitamins



**Oat drinks**  
- banana  
- vanilla  
- strawberry



**Hot chocolate**  
25 % of cocoa



Hot & Cold

Hot & Cold

Lactose free

Resealable pack

**Strawberry tea**  
instant tea  
strawberry juice inside  
available with Vitamins



**Cereal drink**  
barley, rye, chicory



**Milk powder**  
- skimmed  
- semi-skimmed  
- full fat  
- whey powder



Hot & Cold

High in fibre

100 % cow milk

**Rice porridge**  
Pro & Prebiotics  
PLMA  
New product award



name of product	weight	packing	pcs / crt	crt/pallet	pcs/pallet *	shelf life
Lemon tea	350 g	paper can	6	240	1440	18 months
Earl grey tea	350 g	paper can	6	240	1440	18 months
Strawberry tea	350 g	paper can	6	240	1440	18 months
Cereal drink	80 g	doypack	12	160	1920	18 months
Rice porridge	15 x 60 g	box	15	190	2850	12 months

\* EURO pallet, height up to 210 cm

**Cocoa powder**  
fat reduced



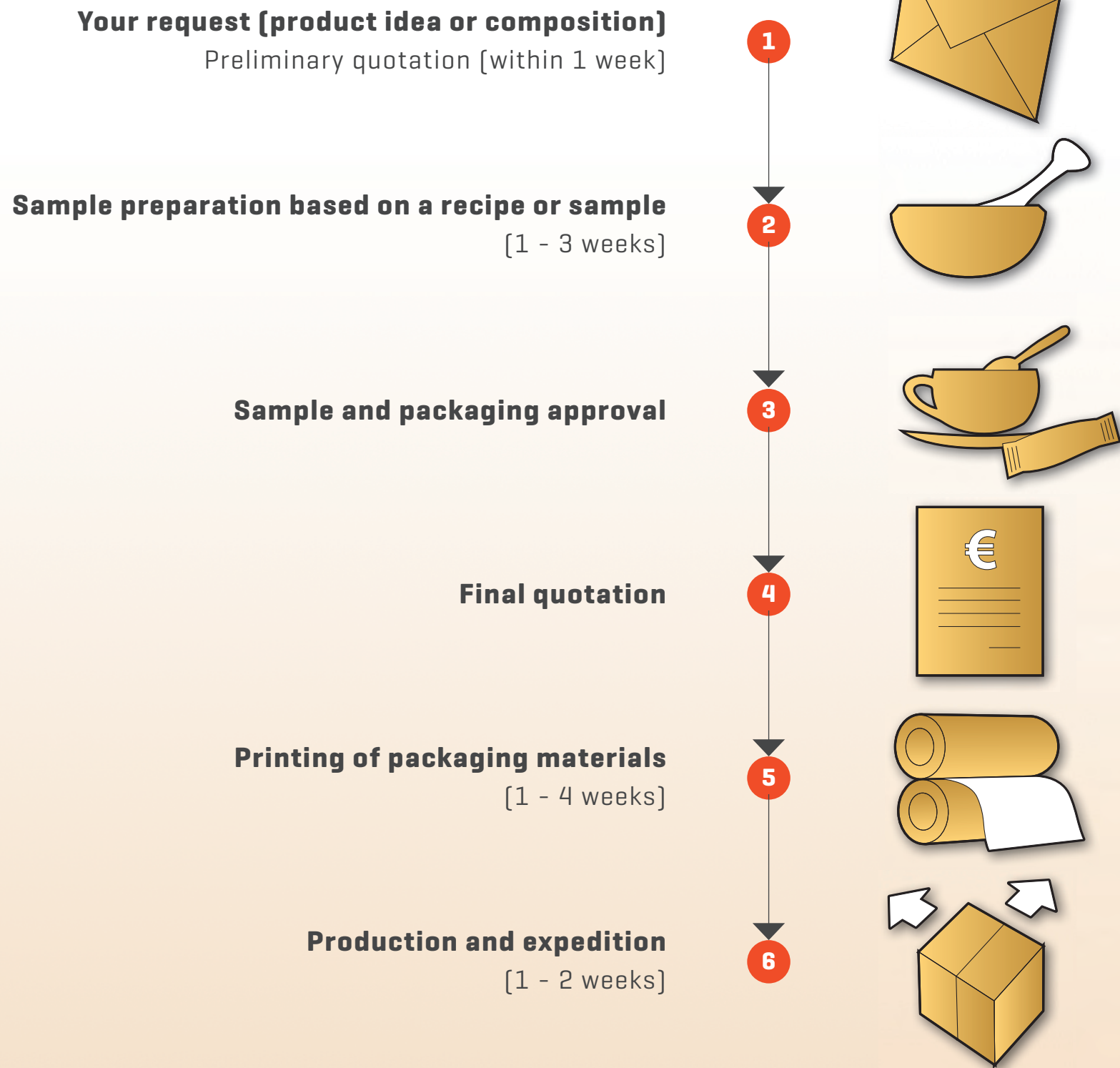
name of product	weight	packing	pcs / crt	crt/pallet	pcs/pallet *	shelf life
Oat drinks	200 g	doypack	10	120	1200	18 months
Hot chocolate	150 g	doypack	10	120	1200	18 months
Milk powder	150 g	doypack	10	120	1200	12, 18, 24 months
Milk powder	400 g	box	12	80	960	12, 18, 24 months
Milk powder	20 g	stick	200	88	17600	12, 18, 24 months
Whey powder	150 g	doypack	10	120	1200	18 months
Cocoa powder	100 g	box	12	180	2160	18 months

\* EURO pallet, height up to 210 cm

Private label

UTZ





**Customize your product**



Our customers include companies such as **Kaufland, Aldi, Norma, Globus or Poundstretcher.**

We can offer conventional, organic, vegan, clean label, UTZ, Kosher and Halal instant mixes and recyclable or compostable packaging.





**Rice protein**  
Protein shake



**Pea protein**  
Protein shake



**Cardamom tea**  
instant tea  
with cardamom



**Saffron tea**  
instant tea  
with saffron



**Hemp protein**  
Protein shake



**Pumpkin protein**  
Protein shake



**Hibiscus tea**  
instant drink  
from hibiscus



**Masala tea**  
instant tea with  
masala spice blend



**Whey protein**  
Protein shake



name of product	weight	packing	pcs / crt	crt/pallet	pcs/pallet *	shelf life
<b>Rice protein</b>	150 g	doypack	20	98	1 960	18 months
<b>Pea protein</b>	150 g	doypack	20	98	1 960	18 months
<b>Hemp protein</b>	150 g	doypack	20	98	1 960	18 months
<b>Pumpkin protein</b>	150 g	doypack	20	98	1 960	18 months
<b>Whey protein</b>	150 g	doypack	20	98	1 960	18 months

\* EURO pallet, height up to 210 cm

**Ginger tea**  
instant drink  
with ginger extract



name of product	weight	packing	pcs / crt	crt/pallet	pcs/pallet *	shelf life
<b>Cardamom tea</b>	150 g	doypack	20	98	1 960	18 months
<b>Saffron tea</b>	150 g	doypack	20	98	1 960	18 months
<b>Hibiscus tea</b>	150 g	doypack	20	98	1 960	18 months
<b>Masala tea</b>	150 g	doypack	20	98	1 960	18 months
<b>Ginger tea</b>	150 g	doypack	20	98	1 960	18 months

\* EURO pallet, height up to 210 cm



# Research & Development

**Protein coffee**  
50 % of proteins



**Tomato soup**  
high in protein



**Vegan**

**Hot & Cold**

**Lunar latté**  
for better sleep  
functional drink



**Herbal coffee**  
caffeine free



**Contains hops extract**

**Available on Amazon**

**Hot chocolate**  
Rainforest Alliance  
certified cocoa



**Resealable pack**

name of product	weight	packing	pcs / crt	crt/pallet	pcs/pallet *	shelf life
Protein coffee	200 g	doypack	20	98	1 960	18 months
Tomato soup	100 g	doypack	20	98	1 960	18 months
Lunar latté	100 g	doypack	20	98	1 960	18 months
Herbal coffee	300 g	doypack	20	60	1 200	18 months
Hot chocolate	200 g	doypack	20	98	1 960	18 months

\* EURO pallet, height up to 210 cm

# Types of packaging

Type of packaging	Picture	Minimum printing quantity per design	Minimum production quantity
Stick 5 g - 20 g		250.000	20.000
Sachet 10 g - 40 g		170.000	15.000
Bag 25 g - 200 g		80.000	10.000
Box any size		10.000	1.500
Multipack 10 - 24 sticks		20.000	1.500
Doypack 100 g - 200 g		25.000	2.000
Glass jar 50 g - 400 g		500	500
Cardboard can 50 g - 750 g		2.500	2.500
Standing bag 300 g - 2500 g		200 (label) 20.000 (printed)	200
Bag 20 kg - 25 kg		20 (label) 2.500 (printed)	20
Big bag 400 kg - 800 kg		-	1

**AEO**  
certified

**PLMA**  
member

**VETERINARY**  
certified

**IFS**  
certified

**FDA**  
registered



LYONS



LYONS



For more than 100 years is LYONS synonym of quality, innovation and style.

We are still on a mission to make LYONS products the best tasting and the most convenient coffee drinks on the market.



List of LYONS drinks	weight	packing	pcs / crt	crt/pallet	pcs/pallet *	shelf life
3in1 classic	10 x 18 g	bag	12	64	768	18 months
3in1 brown sugar	24 x 18 g	bag	8	64	512	18 months
3in1 latte	24 x 18 g	bag	8	64	512	18 months
3in1 caramel	24 x 18 g	bag	8	64	512	18 months
2in1 classic	10 x 18 g	bag	12	64	768	18 months
Cappuccino	12 x 15 g	box	10	180	1800	18 months
Cappuccino	8 x 12,5 g	box	12	204	2448	18 months
Cappuccino Irish cream	12 x 15 g	box	10	180	1800	18 months
Cappuccino Amaretto	12 x 15 g	box	10	180	1800	18 months
Cappuccino Unsweetened	12 x 15 g	box	10	180	1800	18 months
Cappuccino Hazelnut	12 x 15 g	box	10	180	1800	18 months
Cappuccino Gingerbread	12 x 15 g	box	10	180	1800	18 months
Caffé Latté	12 x 15 g	box	10	180	1800	18 months
Caffé Latté	8 x 12,5 g	box	12	204	2448	18 months
Mochaccino	12 x 15 g	box	10	180	1800	18 months
Flat white	12 x 15 g	box	10	180	1800	18 months
Iced latté Salted caramel	12 x 15 g	box	10	180	1800	18 months
Iced latté Vanilla	12 x 15 g	box	10	180	1800	18 months
Hot chocolate	200 g	doypack	12	176	2112	18 months

\* EURO pallet, height up to 210 cm



## Vending mixes

### Coffee



product	weight	pieces per carton	pieces per pallet
Instant coffee freeze dried - gold	500 g	6	420
Instant coffee agglomerated - classic	500 g	6	420
Instant coffee spray dried - mocca	500 g	6	420
Instant coffee 3in1	1 000 g	10	600
Instant coffee 3in1 ICE	1 000 g	10	600
Instant coffee 2in1	1 000 g	10	600
Roasted coffee beans 100% Arabica	1 000 g	6	480
Roasted coffee beans Cremoso	1 000 g	6	480
Roasted coffee beans Espresso	1 000 g	6	480
Roasted coffee beans Classico	1 000 g	6	480

### Cappuccino



product	weight	pieces per carton	pieces per pallet
Cappuccino classic	1 000 g	10	720
Cappuccino vanilla	1 000 g	10	720
Cappuccino irish cream	1 000 g	10	720
Cappuccino hazelnut	1 000 g	10	720
Cappuccino caramel	1 000 g	10	720
Cappuccino salted caramel	1 000 g	10	720
Cappuccino macaron pistachio	1 000 g	10	720
Cappuccino amaretto	1 000 g	10	720
Cappuccino ICE	1 000 g	10	720

### Whiteners



product	weight	pieces per carton	pieces per pallet
Coffee creamer Premium (based on coconut fat)	1 000 g	10	600
Coffee creamer Economy (based on palm and coconut fat)	1 000 g	10	600
Topping milk	750 g	10	600
Topping with sugar	1 000 g	10	600
Skimmed milk (can be flavoured)	1 000 g	10	600
Vanilla milkshake	1 000 g	10	600
Caramel milkshake	1 000 g	10	600

## Vending mixes

### Tea



product	weight	pieces per carton	pieces per pallet
Cardamom tea	1 000 g	10	720
Saffron tea	1 000 g	10	720
Masala tea	1 000 g	10	720
Tea latté	1 000 g	10	720
Lemon tea	1 000 g	10	720
Raspberry and blackcurrant tea	1 000 g	10	720
Orange tea	1 000 g	10	720
Peach tea	1 000 g	10	720
Matcha tea	1 000 g	10	720
Instant 3in1 tea/ ICE	1 000 g	10	720

### Chocolate



product	weight	pieces per carton	pieces per pallet
Choco drink 15	1 000 g	10	720
Choco drink 13	1 000 g	10	720
Choco drink flavoured	1 000 g	10	720
Protein choco drink	1 000 g	10	720
White chocolate	1 000 g	10	720

- Neutral silver or black bag with your label from 500 pcs.
- Your own printed bag from 30.000 pcs.
- Possible to develop personalised recipe.

**Cappuccino and Chocolate product line available on request also in low sugar content variant**



# Long shelf life



● **36 months shelf life powdered mixes with aluminium barrier like:**

- Protein drink
- Coffee 3in1
- Tea 3in1
- Lemon tea
- Hot chocolate drink
- Isotonic drink
- Fruit juice



● **Fish in a can or bag**

- Tuna fish in brine
- Tuna fish in sunflower oil
- Tuna fish with rice & vegetable
- Smoked sprats in tomato sauce

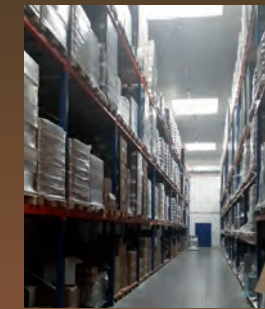


● **Drinks and foods in resealable doypacks**

- Just add water and stir or shake

Quality department and production hall I.

Air-conditioned warehouse with stable temperature 20 °C.



Production hall III. We use blending machines like for pharmaceuticals with excellent homogenization.



**SIMANDL production plant**

Office facilities.



In the packaging line we use automatic weighing systems.

Production hall II. Packaging line for finished products in sticks, standing bags or in doypacks with zipper [at the photo].



## CERTIFICATION

**IFS Higher level**  
**Veterinary certificate CZ 81850215**  
**US FDA Reg. Nr.: 12509110664**  
**D-U-N-S Number: 49-504-7854**  
**AEO**

[www.simandlczech.cz](http://www.simandlczech.cz)



# SIMANDL



## Contact us!



*Export and development manager:*

**Mr. Pavel Rychtecky**

[rychtecky@simandlczech.cz](mailto:rychtecky@simandlczech.cz)

*Phone/WhatsApp/Viber:* +420 737 283 779

*WeChat:* PavelRychtecky

*LinkedIn:* [www.linkedin.com/in/rychtecky](https://www.linkedin.com/in/rychtecky)



*Export and development manager:*

**Mrs. Lucie Ručovská**

[ručovska@simandlczech.cz](mailto:ručovska@simandlczech.cz)

*Phone/WhatsApp:* +420 737 283 780

*LinkedIn:* <https://www.linkedin.com/in/lucie-ručovska/>



*Headquarters and manufacturing site:*

**SIMANDL, spol. s r. o.**, Dolní Marklovice 321  
735 72 Petrovice u Karvíně, Czech Republic

*e-mail:* [simandl@simandlczech.cz](mailto:simandl@simandlczech.cz)

[www.simandlczech.cz](http://www.simandlczech.cz)